



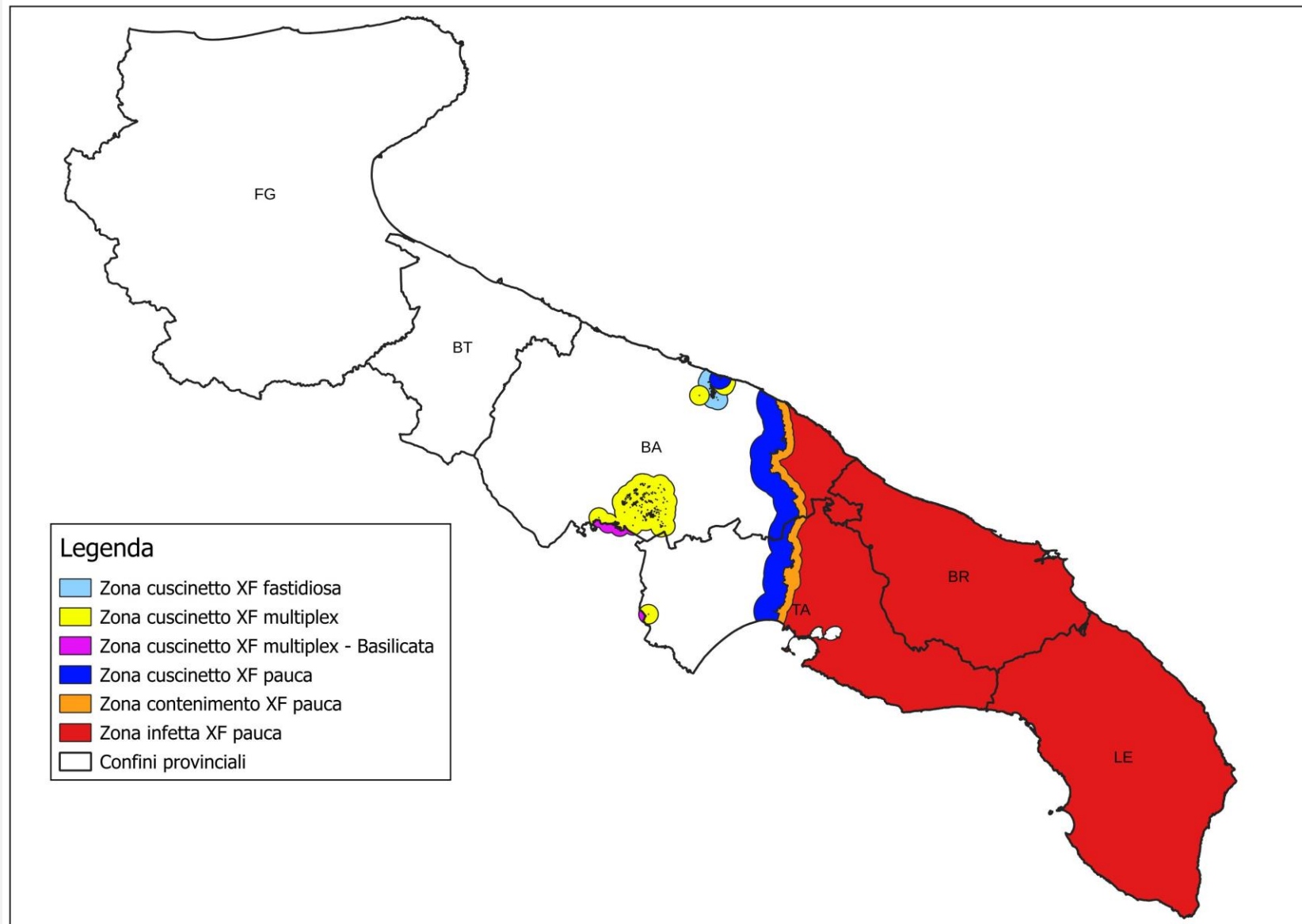
REGIONE PUGLIA

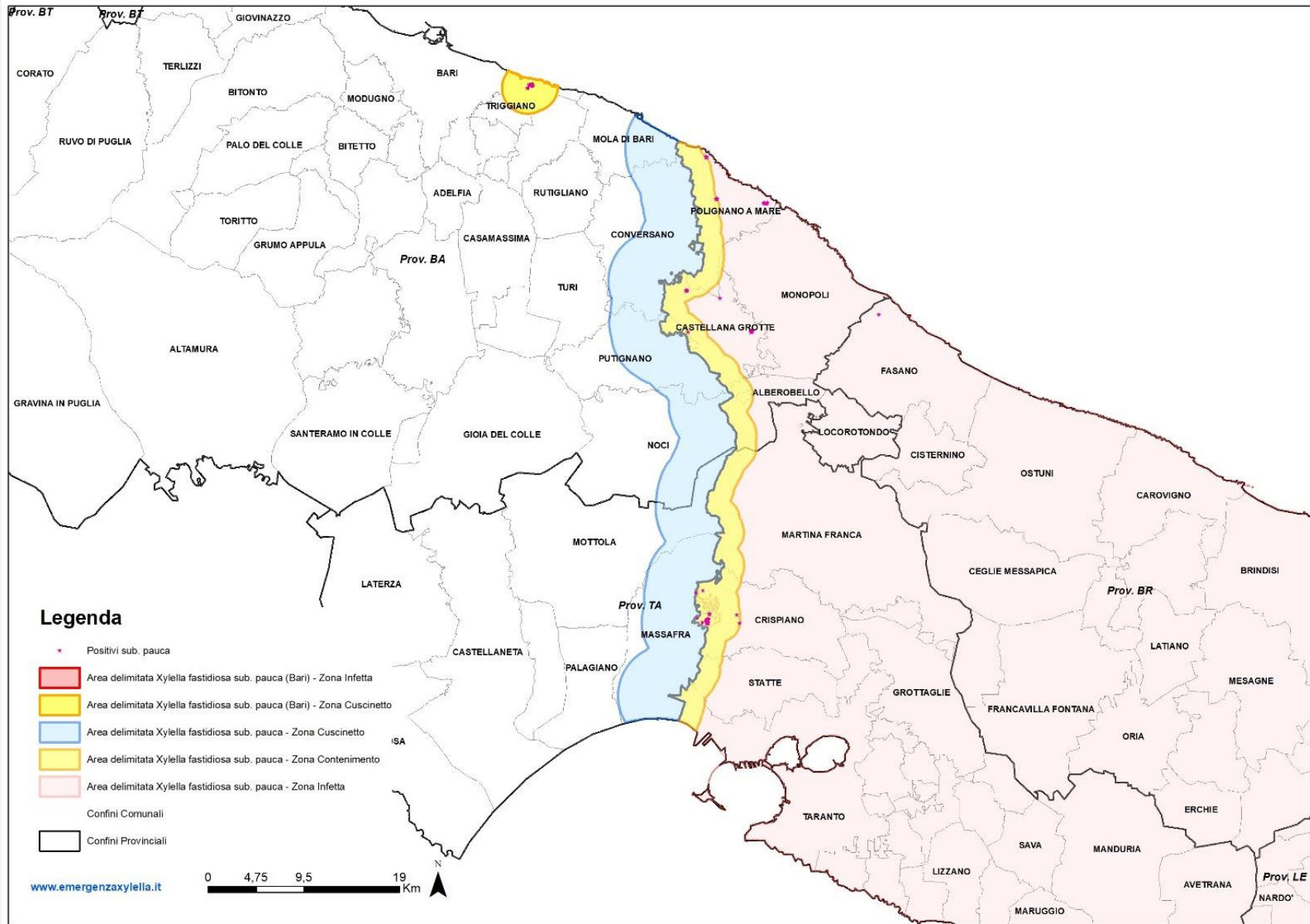
*La gestione di *Xylella fastidiosa* in Puglia*



**36° Forum di Medicina Vegetale
Bari, 12 dicembre 2024**

***Salvatore Infantino*
Dirigente dell'Osservatorio fitosanitario
Regione Puglia**

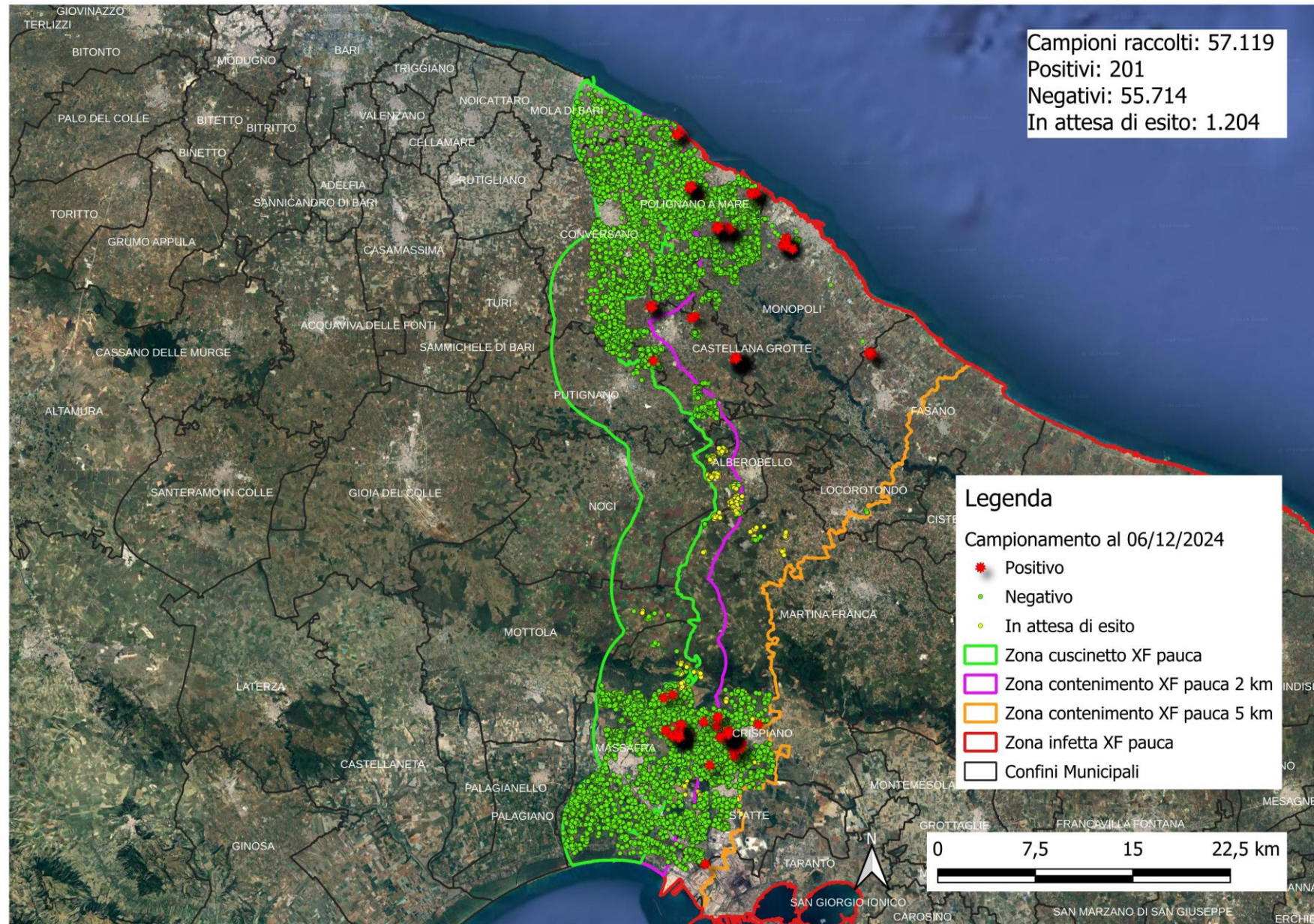




Xylella fastidiosa subspecie pauca: Monitoraggio 2024



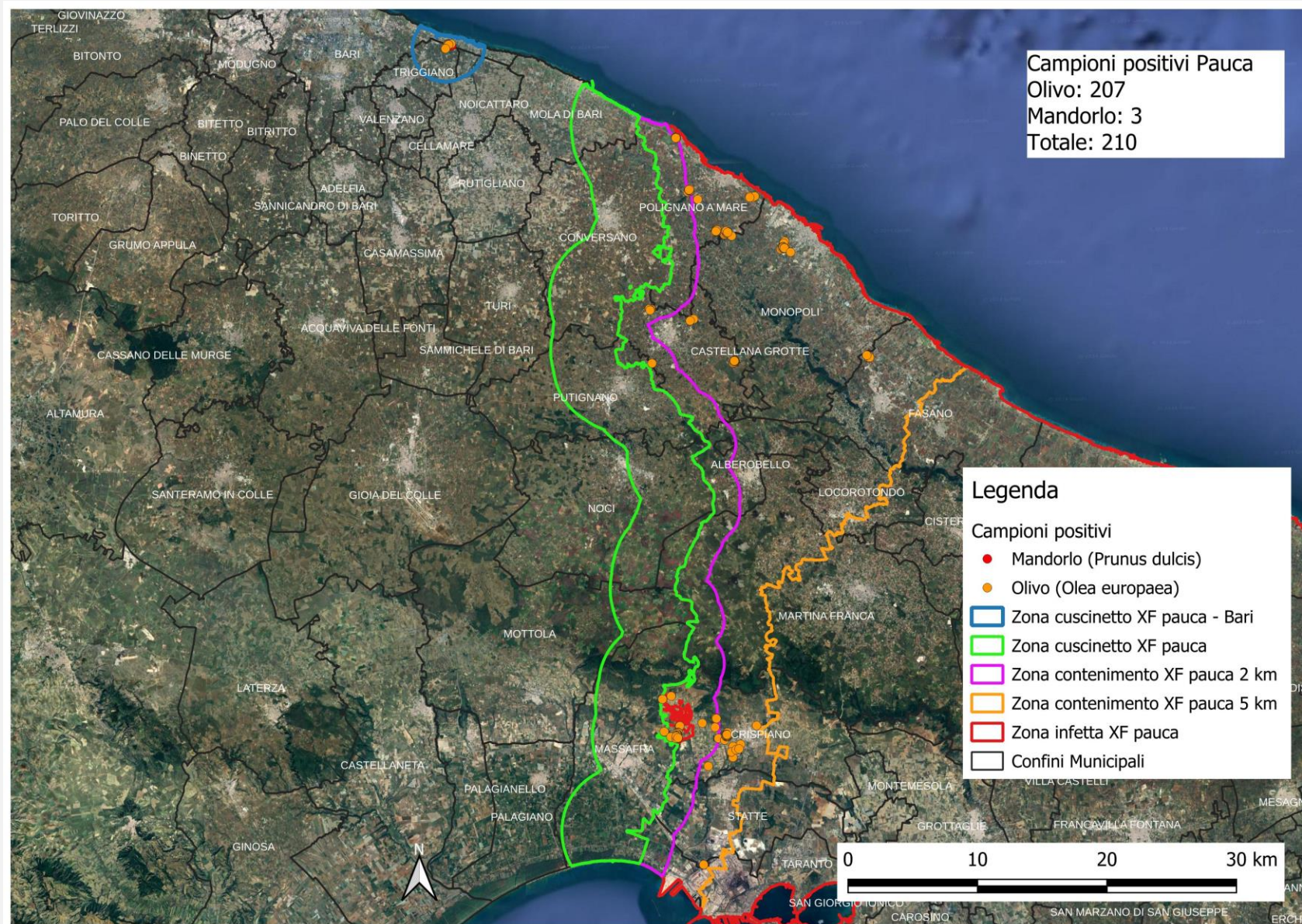
REGIONE PUGLIA



Xylella fastidiosa subspecie *pauca*: Riduzione della zone di contenimento



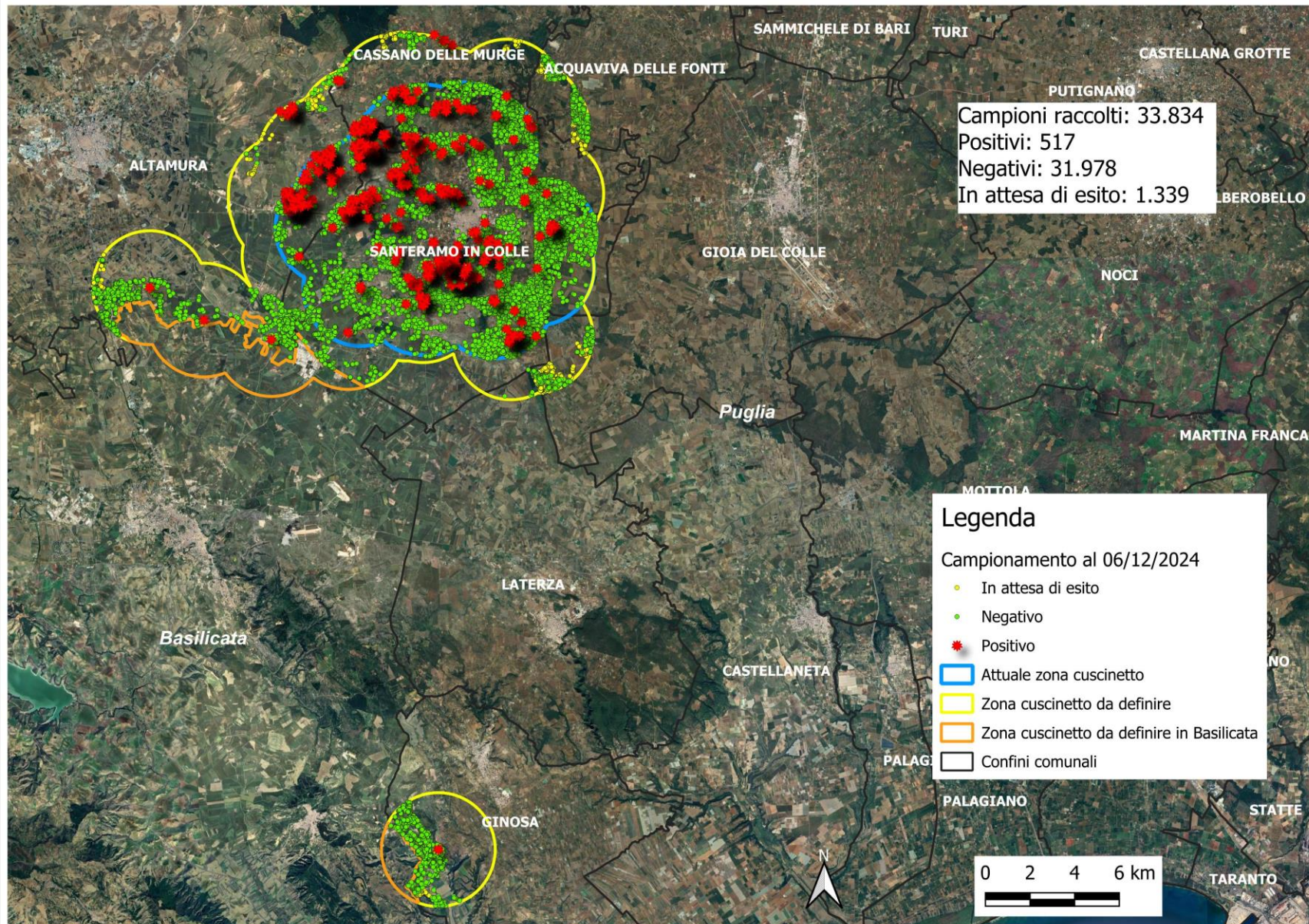
REGIONE PUGLIA



Xylella fastidiosa subspecie multiplex: Delimiting



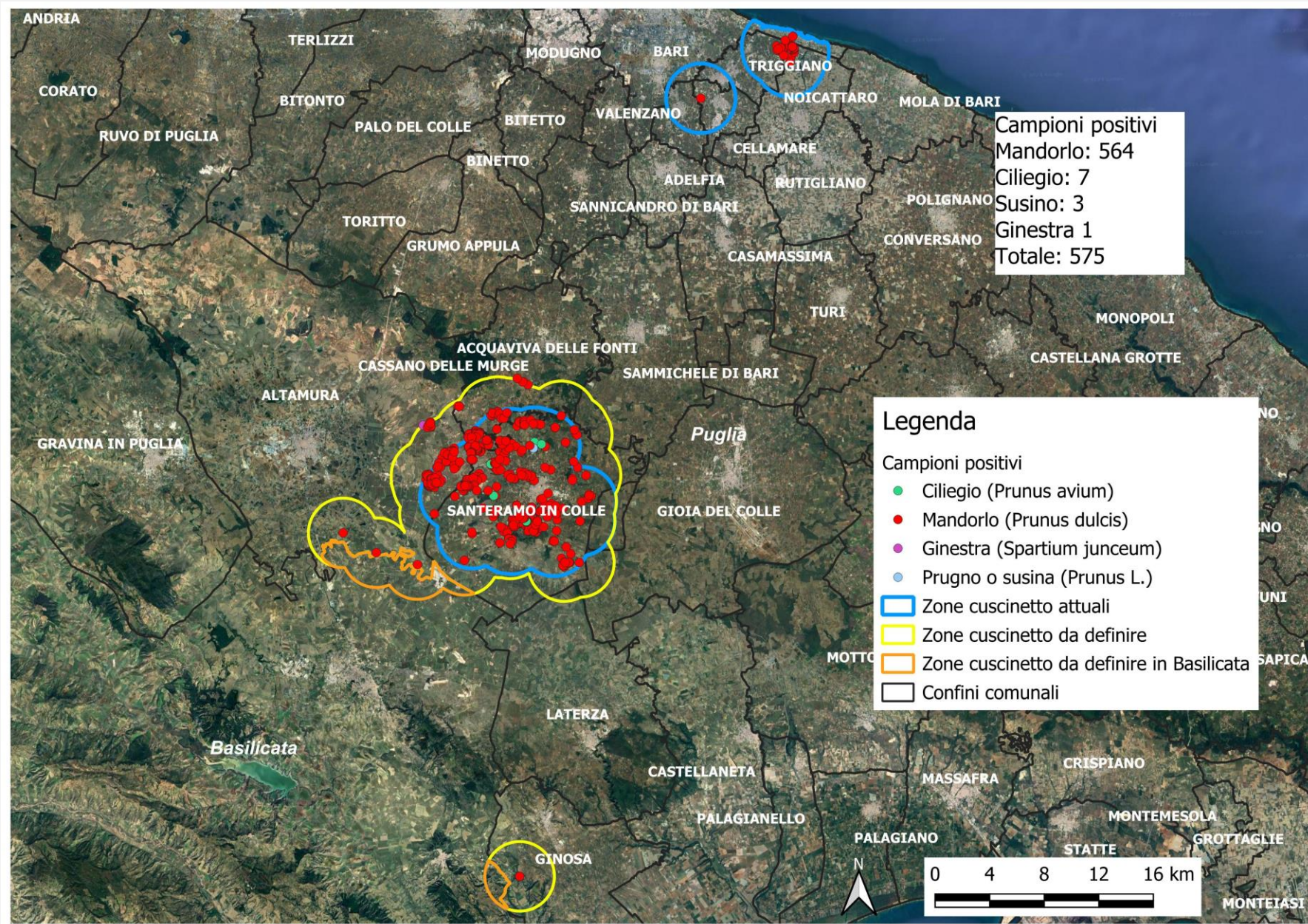
REGIONE PUGLIA



Xylella fastidiosa subspecie *multiplex*: Delimiting



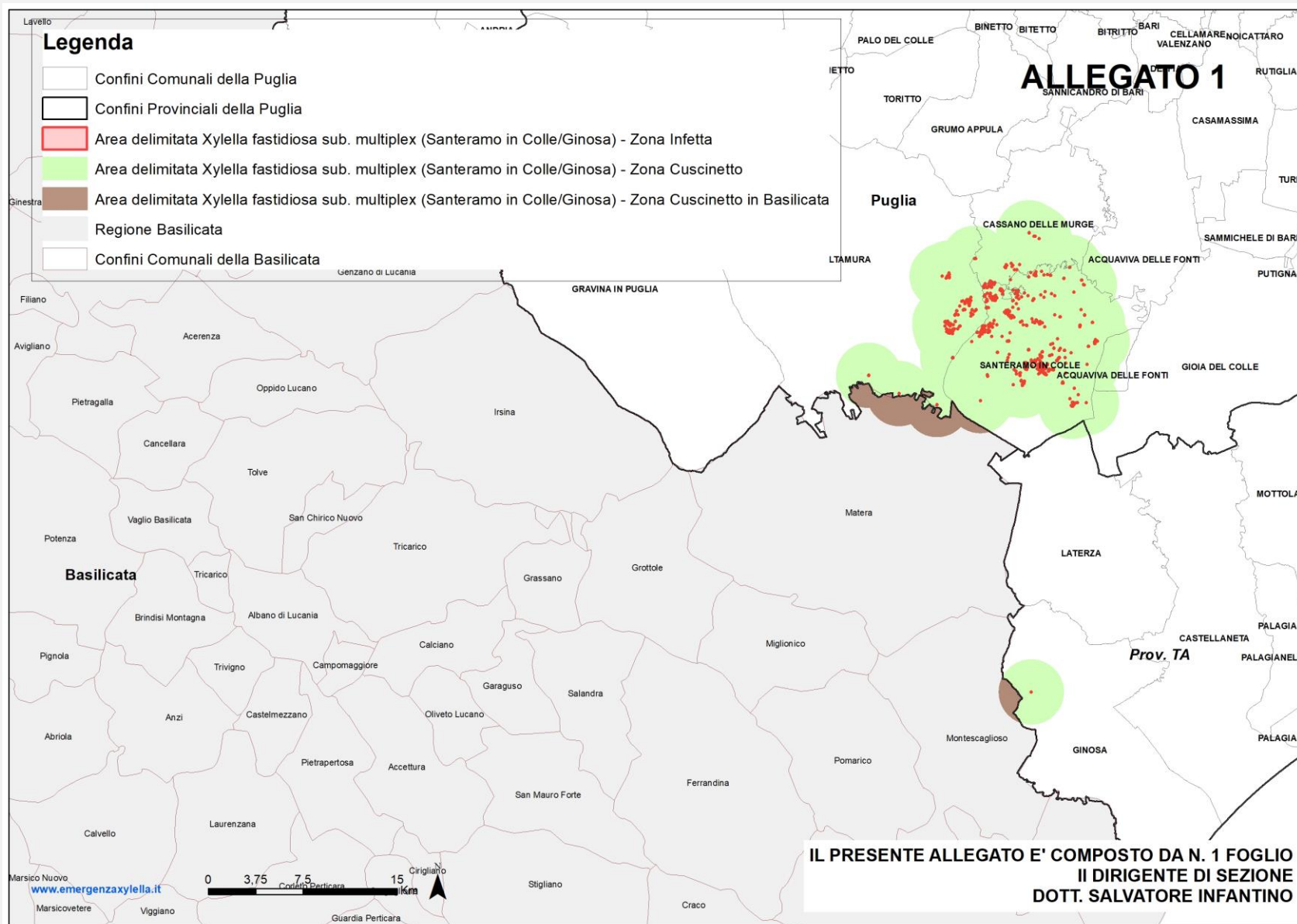
REGIONE PUGLIA



Xylella fastidiosa subspecie multiplex: Delimiting



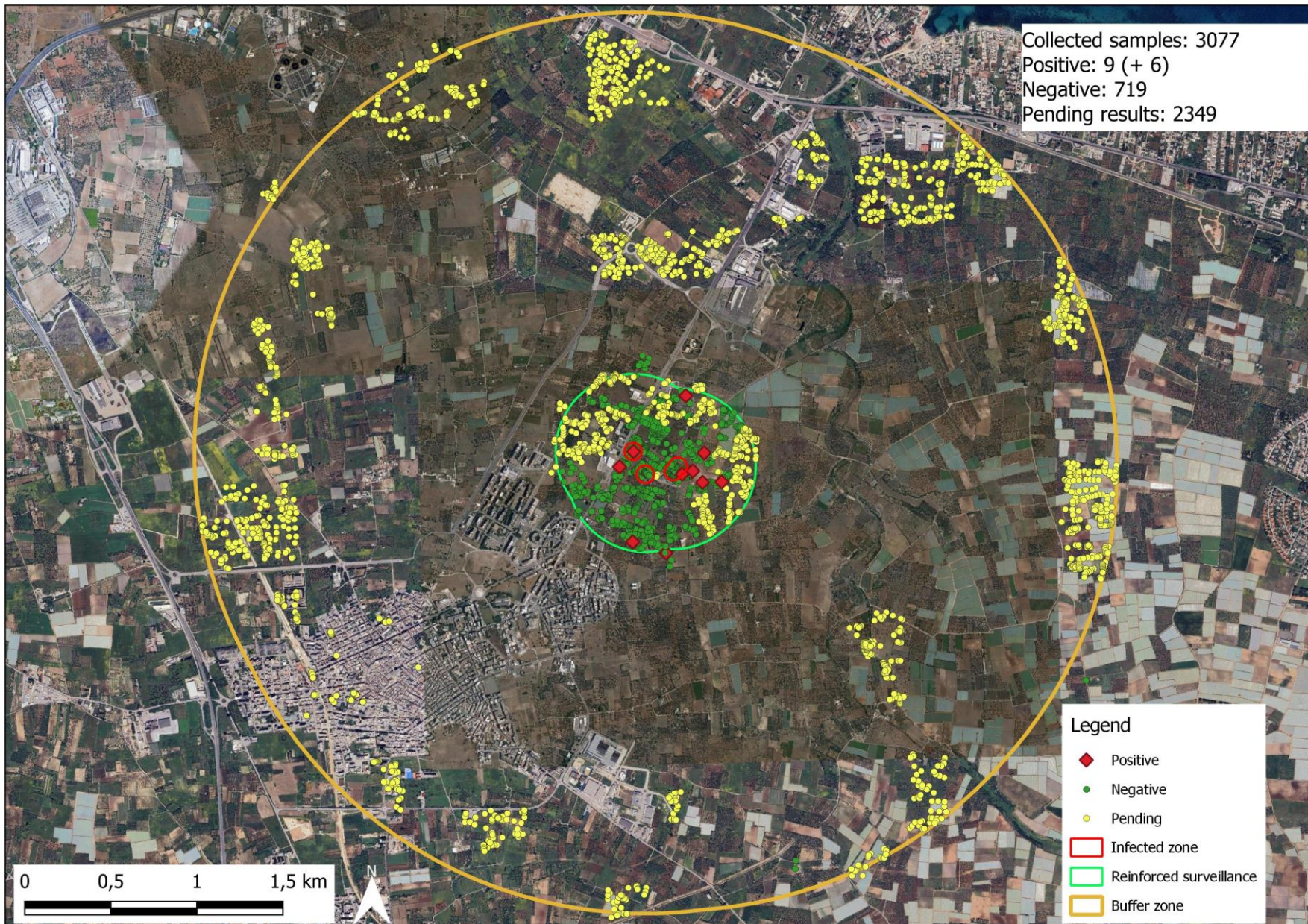
REGIONE PUGLIA



Xylella fastidiosa subspecie *fastidiosa*



REGIONE PUGLIA



Reinforced surveillance was applied on each hectare of almond, vines, fruit plants and the specified species fields starting from the outer part of the buffer zone.

For each hectare that contains specified plants was sampled:

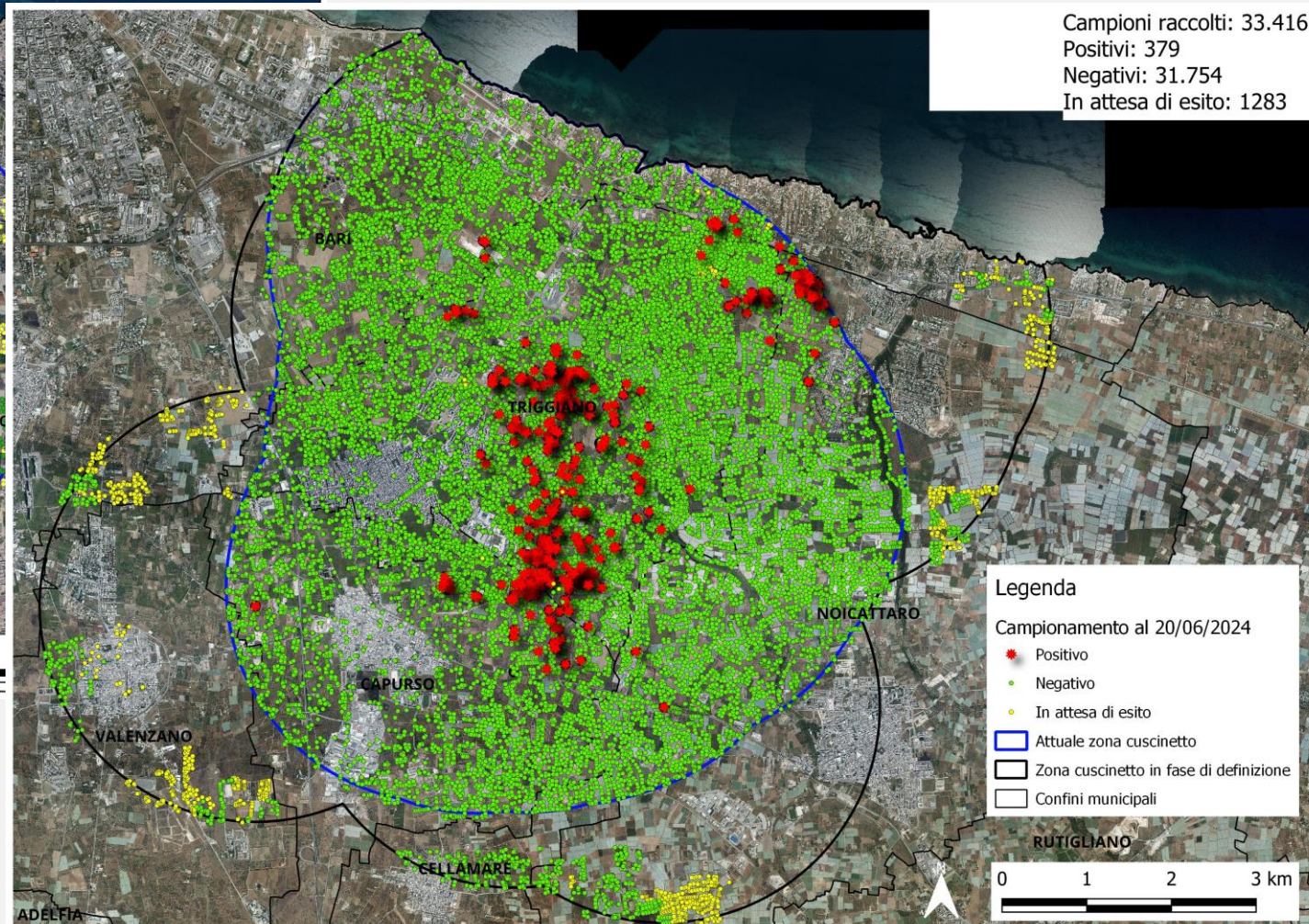
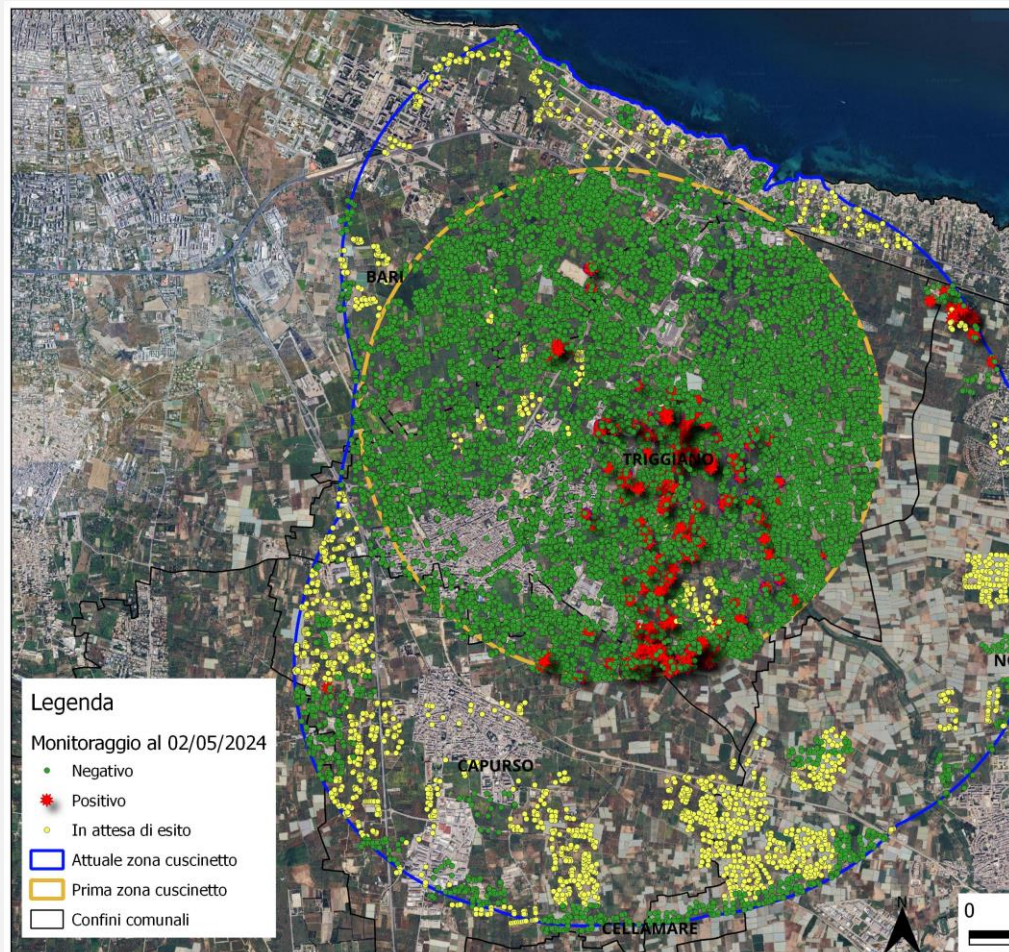
- For vineyard 2 pool samples were taken, each consisting of 4 individual plants taken mainly at the border;
- For the other specified species 1 pool sample consist of 4 individual plants;

The CNR verifies the subspecies on each plant found to be positive.

Xylella fastidiosa subspecie fastidiosa



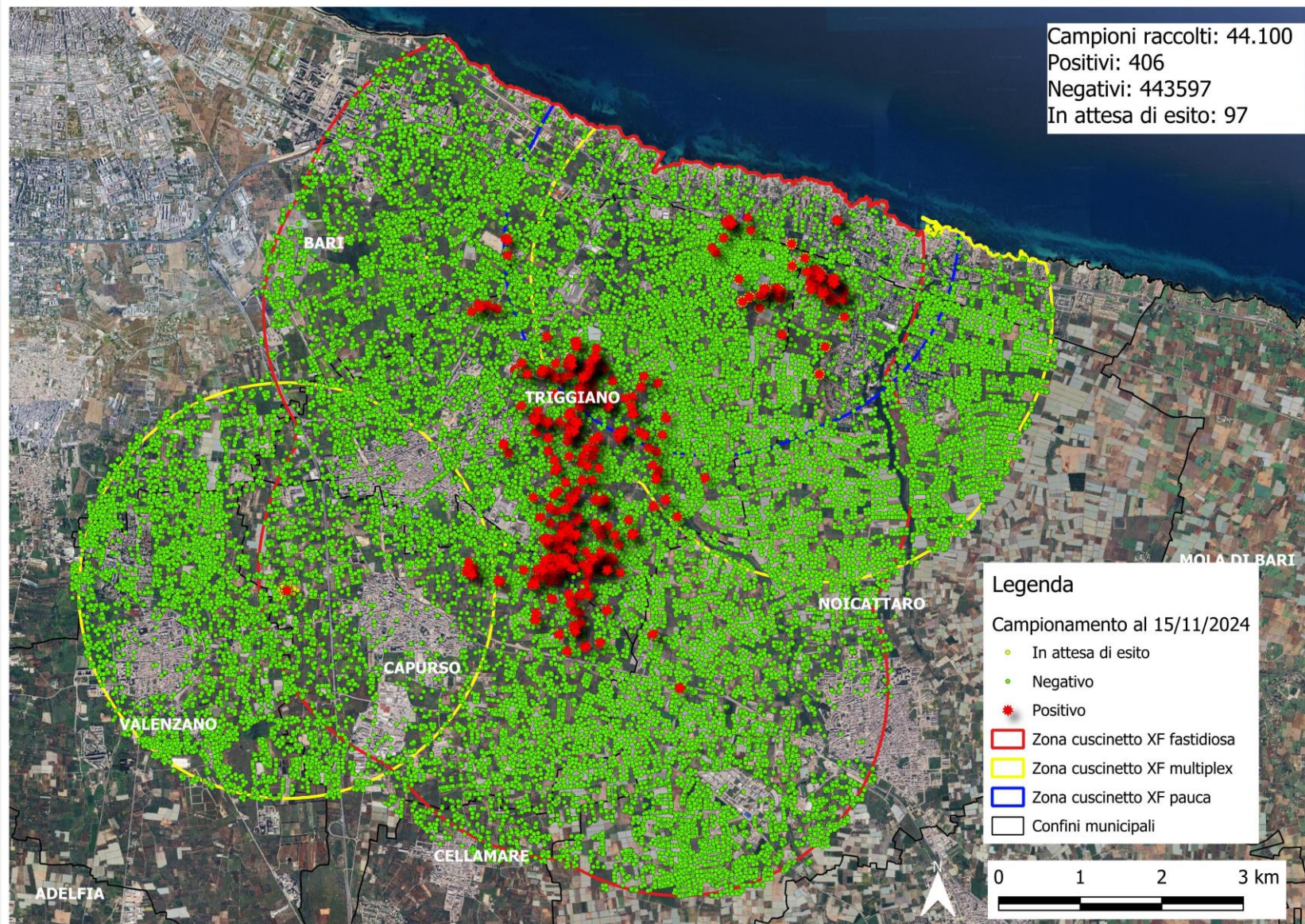
REGIONE PUGLIA



Xylella fastidiosa subspecie *fastidiosa*



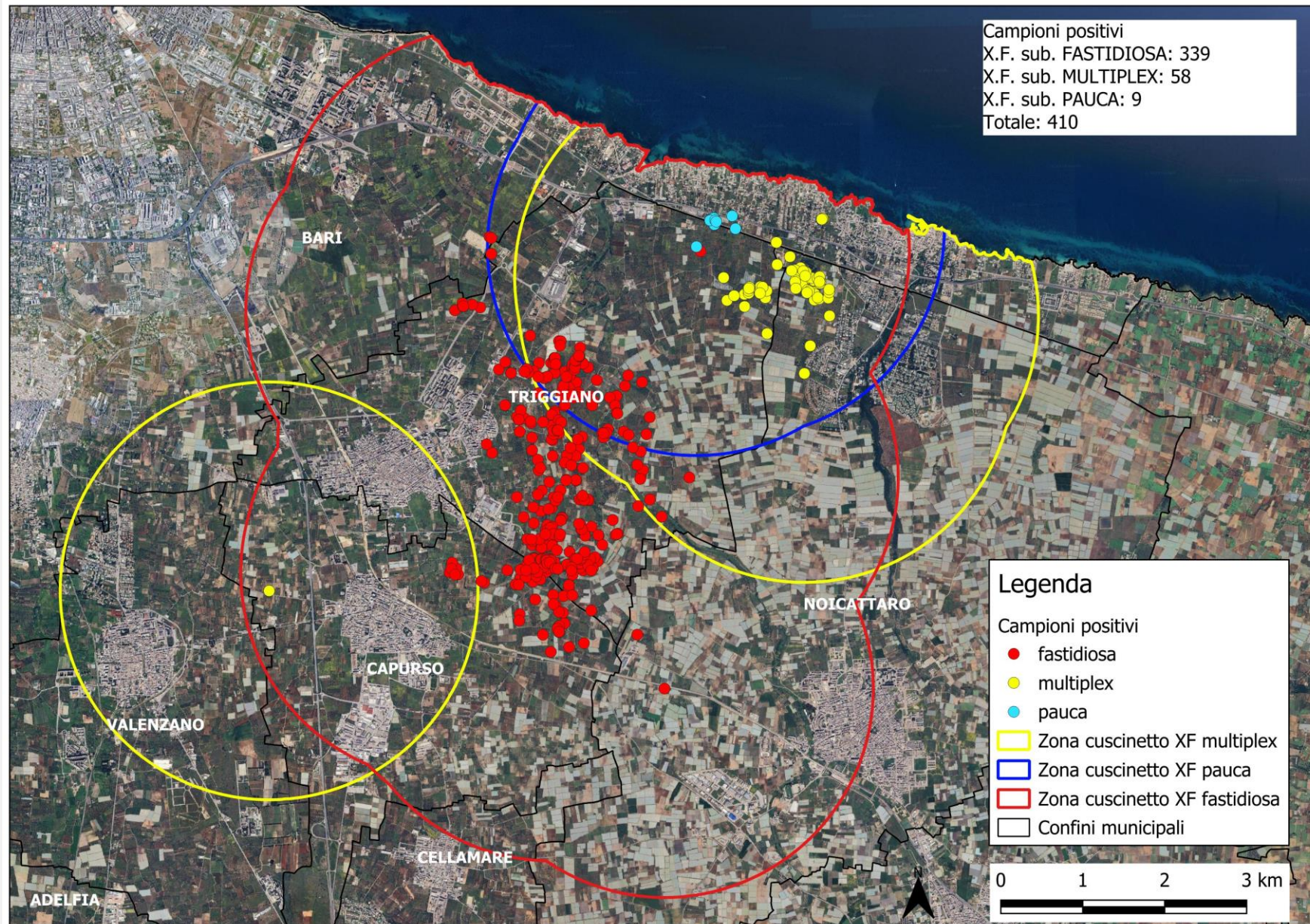
REGIONE PUGLIA



Xylella fastidiosa subspecie *fastidiosa*



REGIONE PUGLIA





REGIONE PUGLIA

Grazie dell'attenzione